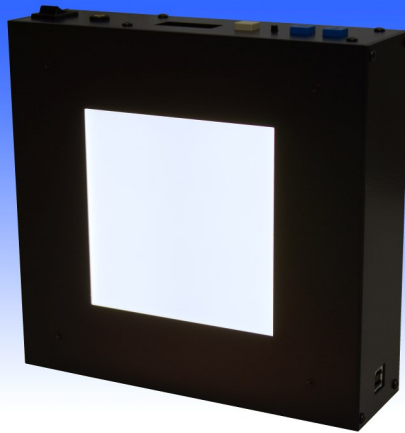
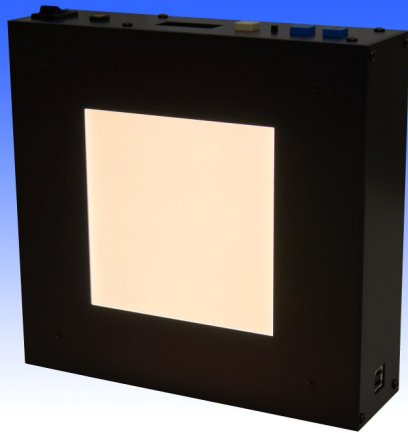




Ultra high color rendering LED viewer

MODEL: VLB-10FBW2



- CE marking compliant model
- 2 colors temperature is possible
- Luminance is always stable by auto-correction
- Luminance switch, registration setting are possible
- Compatible with low luminance
- Ultra high color rendering LED Ra 97

【Summary】

VLB-10FBW2 is viewer light source that is using two colors switchable ultra high color rendering LED.

Auto-corrected with inner sensor, emit stable luminance always.

It is CE marking compliant world sales model.

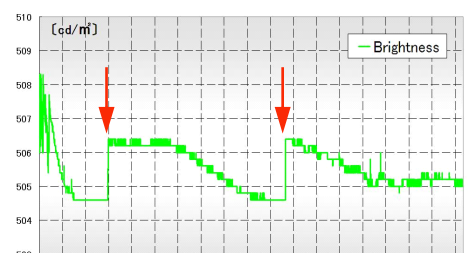
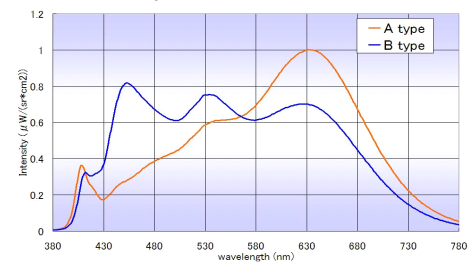
Power / Display / Operation switch



【Specifications】

Luminance value	20-2,500 [cd/m ²] 7-14 [LV]
Luminance registration points	10 points in each color
Luminance surface	100mm × 100mm
Luminance unevenness	6%
Color temperature	2 types selection from the followings. A : 3100 ± 150K , B : 5100 ± 500K , C:6500 ± 500K
Main function	Luminance fine adjustment, registration Color temperature switching, registration luminance switching
Light source lamp	High color rendering LED Ra=97 100[kHz] lighting
Lamp life	Approx.20,000 hours
Communication I/F	USB
Power supply voltage	AC100-240[V], 50/60[Hz]
Measurement environment	[Temperature]20-30[°C] [Humidity]80[%] or less
Dimensions & Weight	[Main unit]186(W) × 190.1(H) × 69(D)mm, 1.5kg (including AC adapter)

Ra=97 Spectrum A&B



State of FB function of luminance
Luminance is constantly monitored,
luminance correction is executed in
red arrow points.

(vertical axis: luminance, horizontal axis: time)

※ This specifications may be changed without a preliminary announcement.



TSUBOSAKA ELECTRIC CO., LTD.

1683-1, Ishikawamachi, Hachioji-shi,
Tokyo, JAPAN 192-0032

TEL : +81-42-646-1127

FAX : +81-42-646-1834

Email:sales@tsubosaka.co.jp

Http://www.tsubosaka.co.jp